



# SYSDYNE eNews

October 2011

### Quick Links

[Website](#)

[Products](#)

[Online Support](#)

[About Us](#)

[ConcreteGo.com](http://ConcreteGo.com)

Find us on Facebook

View our videos on YouTube

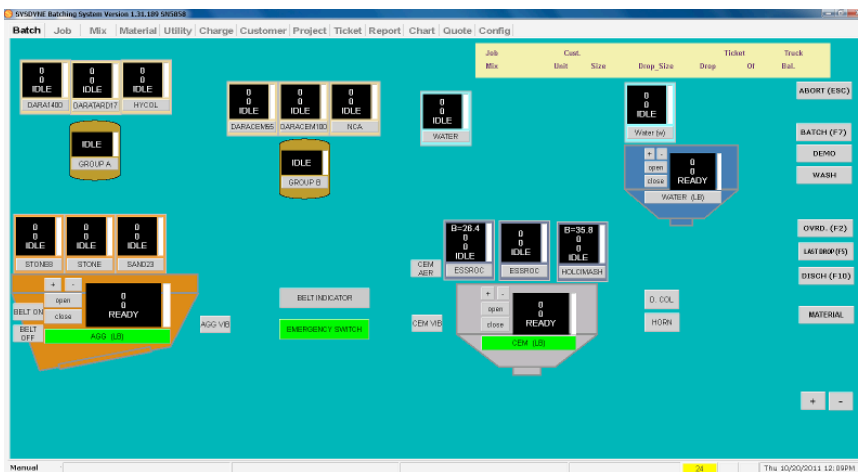
Follow us on

October 25, 2011

Dear Colleagues,

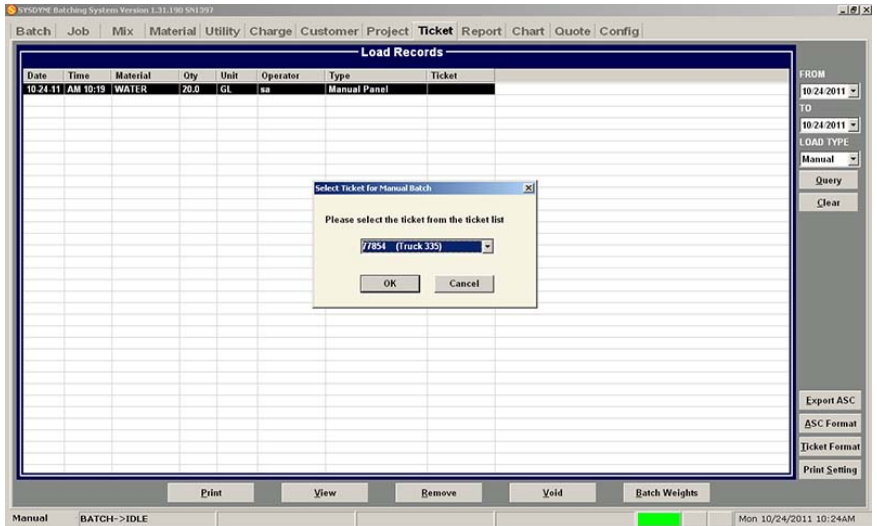
Along with our most up-to-date news, we'd like to share our best wishes for you to enjoy a happy and healthy fall season.

**FIRST**, we'd like to highlight [new features](#) in our [automated batching program](#):



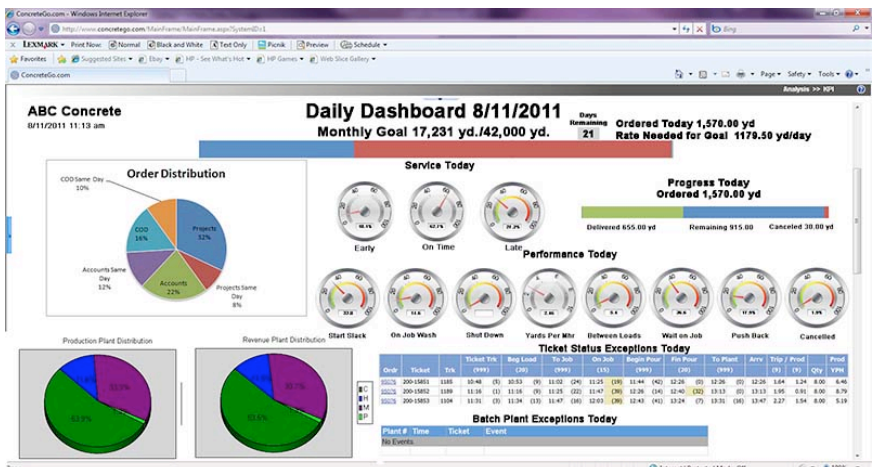
The newest version of our batching system can now track a manual batch more closely. Not only does it still record the manually batched material into the inventory, it now keeps a separate record for each manually batched material. This version can help track all material usage as accurately as possible. The records will show when, what time, which material, and the amount that each specific user batches manually.

The new version goes one step further: it's now possible to link a manual batch material record to a ticket. Here's a scenario: after you finish loading a truck automatically, you manually added 15gl water. The program will record that 15gl water as a manually batched material. You can then link that record with the ticket that you just batched. The batch weights on that ticket will now include and show the manually batched material. You can turn on the option to print it with the batch weights, and it will show up as a separate line on the bottom of the ticket.



Also available is another option (under the operation parameters), which prompts the system to send you a pop-up message whenever you manually batch a material. The pop-up will ask you to choose an existing ticket to which you want to link the manually batched material.

NEXT, we're excited to give you a sneak peek at our latest work to improve ConcreteGo.com. Our programmers have been hard at work designing an optimization panel that we call "The Dashboard".



We believe The Dashboard will become a valuable tool for

We believe the Dashboard will become a valuable tool for dispatchers. The Dashboard combines a range of data (customizable) in one clean page format. This data includes daily yard delivery progress, monthly yard delivery progress, order distribution, plant production volume, ticket status exceptions by day, percentage of late/prompt trucks, and more! And it will always show accurate numbers and statistics because it updates itself every 30 seconds.

Please feel free to contact us for more information!

**JILL ZHANG** will head down to North Carolina to attend the Carolinas Ready Mixed Concrete Association Fall 2011 Workshop on November 2nd and 3rd.



**Carolinas Ready Mixed Concrete Association**

She looks forward to representing Sysdyne and hopes to see you there, too!

Thanks,  
The Sysdyne Team

Contact: Samantha Cosentino  
[scosentino@sysdynecorp.com](mailto:scosentino@sysdynecorp.com)

Sysdyne  
1055 Summer St., 1st Floor  
Stamford, CT 06905  
Tel: (203) 327-3649  
Fax: (203) 325-3600  
[www.sysdynecorp.com](http://www.sysdynecorp.com)  
[www.concretego.com](http://www.concretego.com)

[Forward email](#)

 SafeUnsubscribe™



Try it FREE today.

This email was sent to [scosentino@sysdynecorp.com](mailto:scosentino@sysdynecorp.com) by [scosentino@sysdynecorp.com](mailto:scosentino@sysdynecorp.com) | [Update Profile/Email Address](#) | Instant removal with [SafeUnsubscribe™](#) | [Privacy Policy](#).

Sysdyne Corp | 1055 Summer Street | 1st Floor | Stamford | CT | 06905