



Sysdyne eNews

January 18, 2012

Dear Colleagues,

Happy New Year! We hope 2012 is off to a great start for you.

GET READY BECAUSE IT'S WORLD OF CONCRETE TIME!



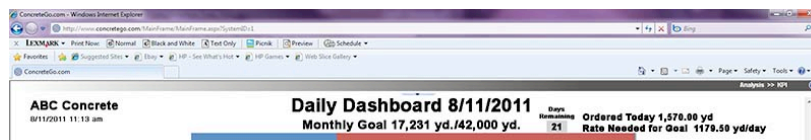
Find us in booth **N951** at the World of Concrete 2012 convention in Las Vegas.

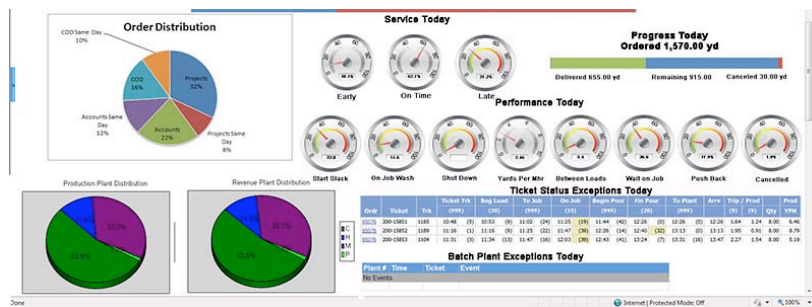
We've been busy preparing a sneak peek of the following new features for ConcreteGo.com, our web-based central dispatch solution:

1. **KPI Module "Key Performance Indicator"** provides immediate performance information to help concrete producers attain goals. It's a powerful management tool that helps show an operation's progress and rate of success. KPI also helps producers main control over all operation centers despite their potential distance from each other.

2. **Daily Dashboard** is a special part of the KPI Module. This function shows you how close you are to reaching your monthly goals and includes the following info updated in real time:

- Performance Today
- Progress Today
- Service Today (Early, On time, Late)
- Ticket Status Exceptions
- Order Distribution Graph
- Revenue and Production Plant Distribution





AND MORE...

3. **Credit Check Function** verifies your customers credit levels and alerts you if they haven't paid or if they have overstepped their limits. You can suspend or cancel these orders, or override the block with an authorization code, if necessary.

4. **ConcreteGo.com Mobile** brings our web-based central dispatch solution to your mobile device, including iPads! Check on order statuses in the field!



We hope you are as excited as we are for the upcoming show. Come by to watch a demo! We'd love to hear your input.

Sincerely,

SYSDYNE

Contact us at:
 Office: 203-327-3649
 Toll free: 877-SYSDYNE
 Fax: 203-325-3600
 Email: sales@sysdynecorp.com

www.sysdynecorp.com
www.concretego.com

[Forward email](#)



This email was sent to scosentino@sysdynecorp.com by scosentino@sysdynecorp.com | [Update Profile/Email Address](#) | Instant removal with [SafeUnsubscribe™](#) | [Privacy Policy](#).

Sysdyne Corp | 1055 Summer Street | 1st Floor | Stamford | CT | 06905